



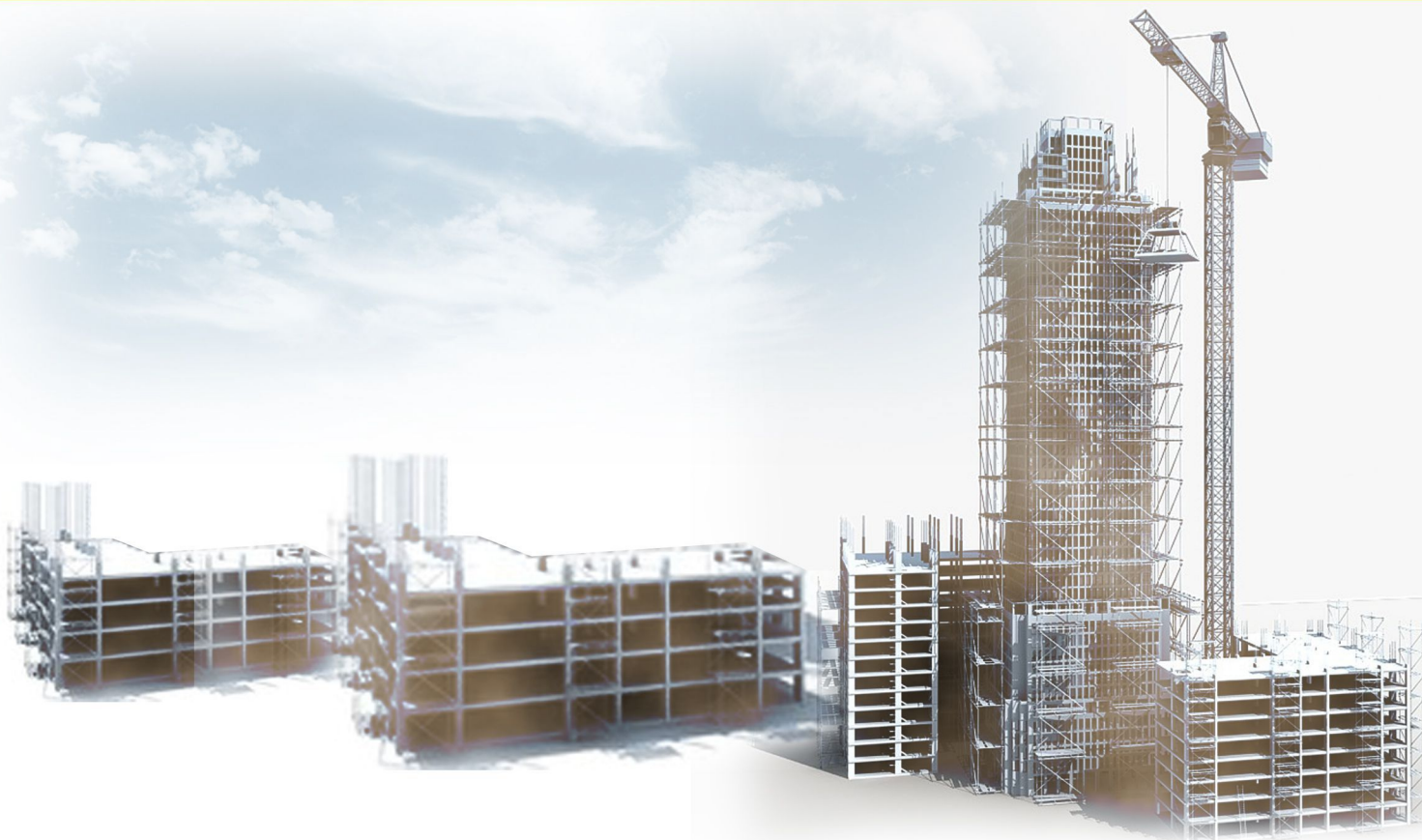
Scaffolding & Formwork  
Accessories



www.pearlscaffold.com



# Steel Cones

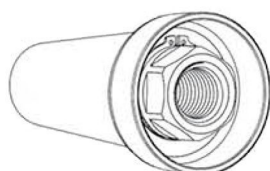


Steel cones are used for applications such as the construction of watertight concrete walls. The cones are supported at the inner side of the formwork and are fastened from the outside using a thread bar and a combination plate, flanged wing nut or equivalent accessories. Size accuracy of the formwork distance is achieved using a lost formtie/water stop Type N.

The steel cones are loosened via an easily accessible hex in the cone cover. The matching PE sleeve facilitates the loosening of the cone. The slim edge cover defines a clear hole that can be easily closed with mortar. However, it leaves a clearly visible indentation in the formwork skin if the outer thread bar is over tightened. The wide edge cover prevents damages to the formwork skin. The hole that remains after unscrewing must be closed elaborately.

Shear forces and lateral pressure caused by steel brackets should be avoided when using anchor bars or products derived from Thread bars. Cones must be used for deflecting lateral forces.

Name	Bar Ø [mm]	Length [mm]	Hex [mm]	Weight [kg/Pc]
STEEL CONE 15/100	40	100	30	0.620
STEEL CONE 15/105	40	105	30	0.670
STEEL CONE 15/75	35	75	26	0.320
STEEL CONE 20/132	48	132	36	0.912
STEEL CONE 15/57	35	57	26	0.240



## Steel-Plastic Cone

The Steel-Plastic Cone with steel core is an alternative to Steel Cones. Its field of application and its load bearing capacity are identical to those of Steel Cones. The Steel-Plastic Cone can be removed from the formwork more easily due to its larger cone inclination and the plastic sheathing. Furthermore, the remaining hole can be closed much better and easier using the matching concrete plug.

Name	Bar Ø [mm]	Length [mm]	Hex [mm]	Weight [kg/Pc]
PLASTIC CONE 15/100	35	100	27	0.450
PLASTIC CONE 15/75	35	75	27	0.350



## Climbing Cone

Since neither Thread bars nor concrete can absorb special shear forces/lateral forces that can for example occur when using climbing formwork, these forces must be deviated via Climbing Cones. Climbing Cones are used to replace Positioning Cones after formwork stripping. Alternatively, positioning cones can be used in combination with metrical screws matching in terms of length and grade.

Name	Bar Ø [mm]	Length [mm]	Hex [mm]	Weight [kg/Pc]
CLIMBING CONE 15 X 152	35	152	40	0.910
CLIMBING CONE 15 X 145	35	145	40	0.830
CLIMBING CONE 15.0	35	165	40	0.780
CLIMBING CONE 15.0/5cm	35	135	40	0.950
CLIMBING CONE 15 X 126	55	126	49	2.140
CLIMBING CONE 20 X 126	55	126	49	2.030
SHAFT PLAT FORM CONE	40	147	55	1.190

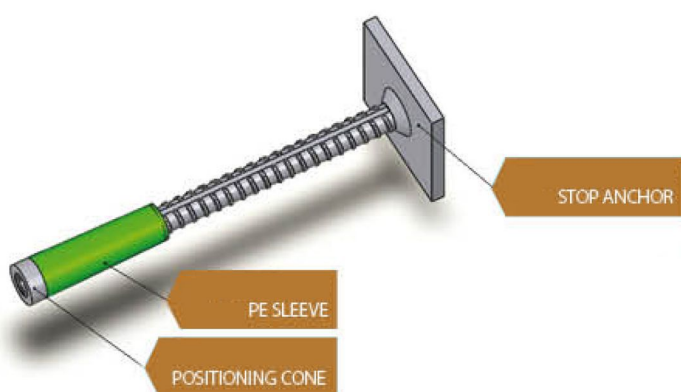




## Positioning Cone

Positioning Cones are used to create anchorage points for climbing formwork, brackets or similar structures. Since Positioning Cones can be nailed to any free space on the formwork skin from the inside thanks to the metal or plastic Nail Plate, the point is independent of existing anchor holes and the formwork skin does not have to be perforated. Anchors such as Wobble, Hook, Fix or Plate Anchors can be used for bracing Positioning Cones. After stripping the formwork and unscrewing the Nail Plate, the brackets can either be fixed using a metric screw, or the Positioning Cone can be exchanged for a Climbing Cone the brackets can be fixed to. We offer matching PE Sleeves to facilitate the unscrewing of Positioning Cones.

Name	Bar Ø [mm]	Length [mm]	Hex [mm]	Weight [kg/Pc]
POSITIONING CONE 15/80	35	80	----	0.300
POSITIONING CONE 15/110	35	110	----	0.400



## Hexagonal Nut

Similar to Wing Nuts, Hex Nuts can be used as anchor nuts in conjunction with a Waler Plate or a Flat Bearing Plate.

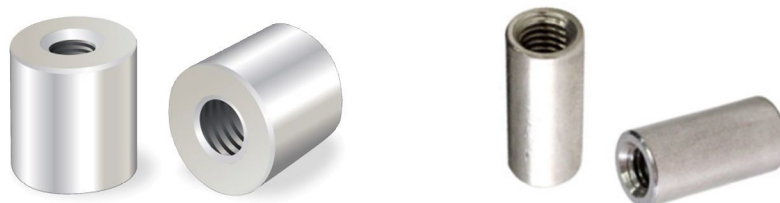
Name	Bar Ø [mm]	Length [mm]	Hex [mm]	Weight [kg/Pc]
HEX 20/30	35	30	35	0.150
HEX 20/60	35	60	35	0.310
HEX 20/110	35	110	35	0.600
HEX 20/130	35	130	35	0.655
HEX 15/50	30	50	30	0.210
HEX 15/25	30	25	30	0.100
HEX 15/70	30	70	30	0.300
HEX 15/100	30	100	30	0.420





## Round Nut

Name	Bar Ø [mm]	Length [mm]	Hex [mm]	Weight [kg/Pc]
ROUND NUT 30/40	30	40	----	0.140
ROUND NUT 30/110	30	110	----	0.415



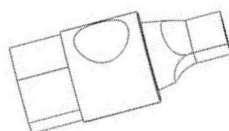
## PE Sleeve

Name	ForCone [mm]	Length [mm]	Hex [mm]	Weight [kg/Pc]
SEALING SLEEVES K 15.0	15 x 126	120	---	0.026
SEALING SLEEVES 15.5	15 X 110	100	---	0.012
SEALING SLEEVES 15.0	15 X 80	72	---	0.008
SEALING SLEEVES 20 K		158	---	0.040



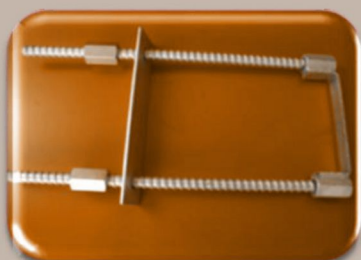
## Positioning Cone Spanner

Bar Ø	Length [mm]	Hex [mm]	Weight [kg/Pc]
15	80	30	0,3
20/26	90	36	0,45



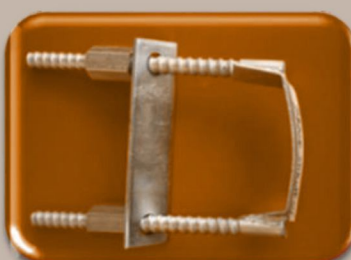


### Brace Stirrup



Weight: 2.875 kg  
Material Hr Sheet/Mild Steel Shaft  
Electroplating Galvanized

### Brace Stirrup L=270



Weight: 1.830 kg  
Material Hr Sheet/Mild Steel Shaft  
Electroplating Galvanized

### Out Side Corner Tie Bracket



Weight: 3.300 kg  
Material Hr Sheet  
Hot Dip Galvanized

### Fixing Corner 340



Weight: 1.425 kg  
Material Hr Sheet  
Electroplating Galvanized

### Fixing Corner N



Weight: 1.680 kg  
Material Hr Sheet  
Electroplating Galvanized

### Lifting Bracket



Weight: 5.800 kg  
Material Hr Sheet  
Hot Dip Galvanized

### Adjusting Spindle



Weight: 3 kg  
Material Hr Sheet/Mild Steel Shaft  
Electroplating Galvanized

### FF Pick Bracket



Weight: 1.130 kg  
Material Hr Sheet  
Electroplating Galvanized

### U-Head for Screw Jack



Weight: 2.900 kg  
Material Hr Sheet  
Electroplating Galvanized

### Fixing Part



Weight: 0.950 kg  
Rod: 15mm Tie Rod  
Electroplating Galvanized

### G-Clamp



Weight: 1kg  
Rod: 15mm Tie Rod  
Electroplating Galvanized

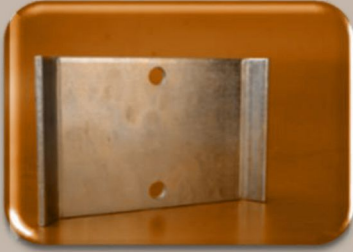
### Heavy Duty Screw Jack



Weight: 7.700 kg  
Electroplating Galvanized



### Locking Plate



Weight: 2.25 kg  
Material Hr Sheet  
Electroplating Galvanized

### Tie Plate



Weight: 1.225 kg  
Material Hr Sheet  
Electroplating Galvanized

### Telescopic Spindle



Weight: 4.125 kg  
Material Hr Sheet/Iron Coated Nut  
Electroplating Galvanized

### Main Beam Head



Weight: 12.300 kg  
Material Hr Sheet  
Painted

### Waling Clamp H2O



Weight: 0.220 kg  
Material Hr Sheet  
Electroplating Galvanized

### Special Clamp



Weight: 0.750 kg  
Material Hr Sheet  
Electroplating Galvanized

### Screw On Coupler



Weight: 0.725 kg  
Material Drop Forged  
Electroplating Galvanized

### Screw Jack Nut



Weight: 2.150 kg  
Material Steel Casting  
Electroplating Galvanized

### Split Nut B



Weight: 2.040 kg  
Material Iron Casted  
Electroplating Galvanized

### Unit Hook



Weight: 0.100 kg  
Material Spring Wire  
Electroplating Galvanized

### Flange Clamp G



Weight: 1.130 kg  
Material C35  
Electroplating Galvanized

### Steel Box



Weight: 3.500 kg  
Material Hr Sheet  
Electroplating Galvanized



U Head 5x8



Weight:3.150 kg  
Material Hr Sheet  
Electroplating Galvanized

25k Pipe Coupler



Weight:0.770 kg  
Electroplating Galvanized

16k Pipe Coupler



Weight:0.580 kg  
Electroplating Galvanized

Base Plate



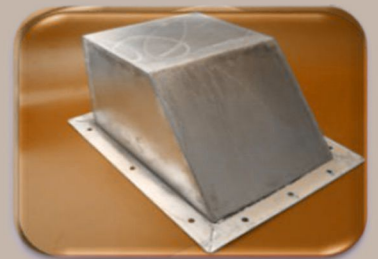
Weight:4.00 kg  
Material Hr Sheet  
Painted

Universal Outside Fixing



Weight:4.600 kg  
Material Hr Sheet  
Hot Dip Galvanized

Steel Pocket



Weight:3.250 kg  
Material Hr Sheet  
Electroplating Galvanized

T-Bolt Washer



Weight:0.086 kg  
Material C35  
Electroplating Galvanized

Hammer Bolt 8mm  
with Nut & Washer



Weight:0.035 kg  
Material C35  
Electroplating Galvanized

Latch Bolt



Weight:0.090 kg  
Material C35  
Electroplating Galvanized

T-Bolt Aluminium  
Washer & Nut



Weight:0.160 kg  
Material C35  
Electroplating Galvanized

Spanner For Universal  
Climbing Cone



Weight:0.950 kg  
Electroplating Galvanized

Spanner For  
Positioning Cone



Weight:0.325 kg  
Material C35  
Electroplating Galvanized



### Brace Locked



Weight:0.300 kg  
Material C35  
Electroplating Galvanized

### Pull Prop Pin



Weight:0.500 kg  
Material C35  
Electroplating Galvanized

### Split Nut Pin



Weight:0.300 kg  
Material C35  
Electroplating Galvanized

### Spring Locked Connecting Pin 16mm



Weight:0.245 kg  
Material C35  
Electroplating Galvanized

### Connecting Pin 10cm



Weight:0.300 kg  
Material Hr Shaft  
Hot Dip Galvanized

### Spring Cotter Pin



Size: 6mm & 3mm  
Material C35  
Electroplating Galvanized

### Wedge & Pin



Material C35  
Electroplating Galvanized

### Suspension Pin



Weight:1 kg  
Material Carbon Steel C40  
Electroplating Galvanized

### Handle Bolt Pin



Weight:0.705 kg  
Material C35  
Electroplating Galvanized

### U-Pin (16k)



Weight:0.380 kg  
Material C35  
Electroplating Galvanized

### Pin Bolt D25



Weight:0.500 kg  
Material C35  
Electroplating Galvanized

### Toggle Pin with Chain



Weight:0.422 kg  
Material C35  
Electroplating Galvanized

### Spring Buckle



Material C35  
Electroplating Galvanized

### Locking Pin for 25k



Weight:0.550 kg  
Material Ms Shaft  
Electroplating Galvanized

### Two way Adjuster HighTensile



Weight:3.120 kg  
Material C45  
Electroplating Galvanized

### Internal Turnbuckle High Tensile



Weight:4.530 kg  
Material C45  
Electroplating Galvanized

### Patalllel Horizontal Bolt & Nut



Weight:3.200 kg  
Material C45  
Electroplating Galvanized

### High Tensile Bolt with nut thread left & right



Size: 6mm & 3mm  
Material C45  
Electroplating Galvanized

### L-Locking Pin



Weight:0.670  
Electroplating Galvanized

### Hanging Screw



Weight:2.400 kg  
Material Ms Shaft  
Electroplating Galvanized

### Pin 14G



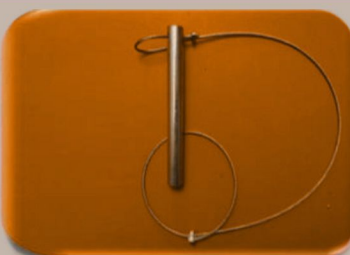
Weight:0.170 kg  
Electroplating Galvanized

### Bolt D25/50



Weight:0.220 kg  
Electroplating Galvanized

### Pin 12mm with Wire



Weight:0.100 kg  
Electroplating Galvanized

### Bolt D25/120



Weight:0.500 kg  
Electroplating Galvanized



### Coner Connecting Plate



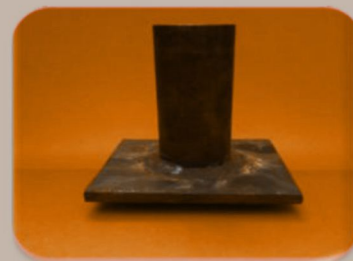
Weight:12 kg  
Material Hr Sheet  
Hot-Dip Galvanized

### Tensile Nut



Weight:0.970 kg  
Material Ms Sheet  
Self Finished

### Cast in Coupler



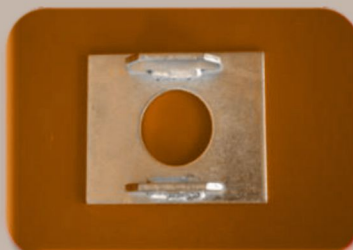
Weight:1.600 kg  
Self Finished

### Adjusting Walling Extension 20/50



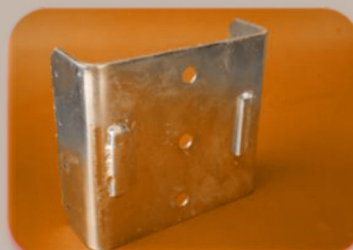
Weight:10.200 kg  
Material Hr Sheet  
Hot-Dip Galvanized

### Top Chord Screw Jack Plate



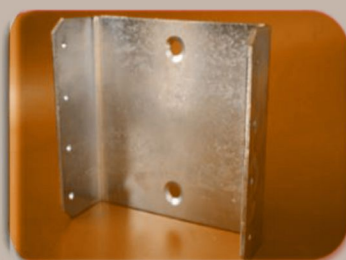
Weight:0.535 kg  
Material Hr Sheet  
Electroplating Galvanized

### U-Head 8x8 (Modified)



Weight:3.150  
Material Hr Sheet  
Electroplating Galvanized

### U-Head 8x8



Weight: 3.150 kg  
Material Hr Sheet  
Electroplating Galvanized

### Pipe Coupler



Weight:0.565 kg  
Hot Dip Galvanized

### Flate Plate with Hex Welded



Weight:1 kg  
Material Hr Sheet  
Self Finished

### Bolt D25/110



Weight:0.440 kg  
Electroplating Galvanized

### Assemble Pin with Spring Cotter



Weight:0.450 kg  
Electroplating Galvanized

### L-Angle Box



Weight:10.755 kg  
Painted

Beam Clamp Top 50



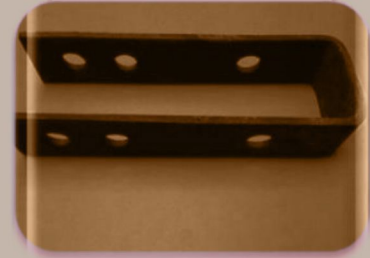
Weight:1.20 kg  
Painted

Diagonal Brace Foot



Weight:2.050 kg  
Painted

Support Bracket  
HB 150



Weight:2.450 kg  
Painted

Adjusting Walling  
Extension 20/50

Top Chord Screw  
Jack Plate

U-Head 8x8 (Modified)

Adjustable Plumbing Strut N (32.0kg/set)

